

# COMMUNITY INFORMATION LEAFLET

Abel Upgrade Modification  
Environmental Assessment

ATTACHMENT 4

## ABOUT DONALDSON COAL

Donaldson Coal owns the Tasman Underground Mine, Abel Underground Mine and Donaldson Mine in the Newcastle Coalfield. Donaldson Coal is a wholly owned subsidiary of Gloucester Coal Ltd.

Donaldson Coal has been operating for more than 10 years with a strong environmental management record.

Donaldson Coal's operations have created more than 350 local jobs, and indirectly hundreds of other jobs are supported

through the use of local contractors and service providers.

Donaldson Coal actively supports local communities. Since 2001 the Donaldson Job Creation Trust has allocated \$1 million to job training and education. As part of Donaldson Coal's commitments for the Abel Underground Mine, the Donaldson Community Welfare Trust is providing \$250,000 over five years to education and community needs such as the "News in Education" program and the Donaldson Conservation Trust has allocated \$1 million for local conservation projects over 10 years.

## ABEL UNDERGROUND MINE

The Abel Underground Mine is an underground coal mining operation south of John Renshaw Drive approximately 23 km northwest of the Port of Newcastle, in the Newcastle Coalfield.

The Abel Underground Mine was approved in June 2007 and underground mining began in early 2008.

The Abel Underground Mine is approved to produce approximately 4.5 million tonnes of run-of-mine (ROM) coal per year using bord and pillar mining methods with a combination of total and partial pillar extraction in the Upper and Lower Donaldson seams.

## OVERVIEW OF THE ABEL MODIFICATION

Donaldson Coal wishes to introduce shortwall mining (120 m wide compared to 165 m wide bord and pillar panels) and longwall mining in some areas to increase the efficiency of the Abel Underground Mine operations (refer to figure). Consistent with Donaldson Coal's previous commitment, no shortwall or longwall mining would occur beneath privately-owned residences without the prior agreement of the landowner.

The modification to the Abel Underground Mine would involve mining only within the

existing approved area and coal seams and the modified mine layout would be developed to meet existing approved subsidence management commitments (e.g. commitments for residences, third order streams and alluvium associated with Blue Gum Creek).

As required under NSW legislation, Donaldson Coal would seek a modification to the existing Abel Underground Mine Project Approval under section 75W of the *Environmental Planning and Assessment Act*,

1979. The flowchart over the page provides a summary of the process.

An Environmental Assessment of the proposed changes is being prepared by recognised experts. The Environmental Assessment will be prepared in consultation with the community, relevant State, Federal and Local government agencies and other relevant stakeholders.

## COMMUNITY INFORMATION SESSIONS

Donaldson Coal will be holding Community Information Sessions at the Black Hill Public School to discuss the modification to the Abel Underground Mine. All members of the local community with an interest in the modification are welcome to attend.

The information sessions are an opportunity to learn more about the modification and how Donaldson Coal will be meeting existing approved subsidence management commitments and addressing the potential subsidence impacts of mining on aspects such as built infrastructure, surface water and biodiversity.

Donaldson Coal representatives involved in the preparation of the Environmental Assessment will be available for one-on-one discussions.

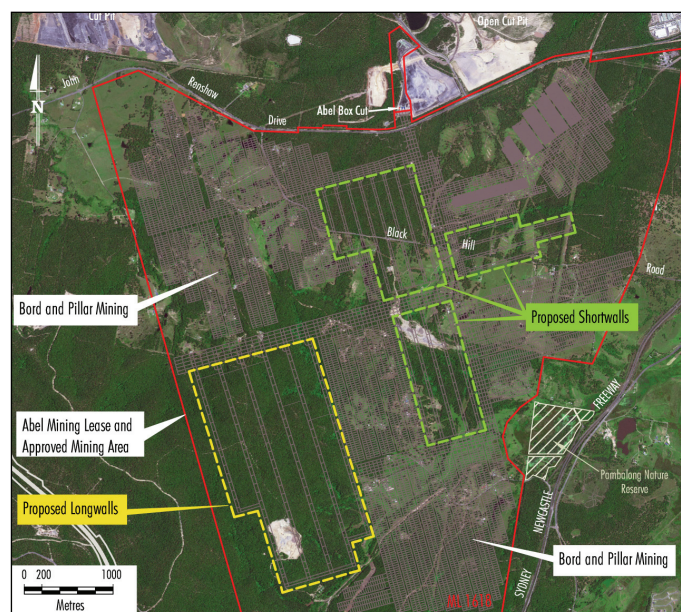
### KEY INFORMATION

**Location:** Black Hill Public School, 408 Black Hill Road, Black Hill

**When:** Tues 6 Dec, Midday - 4.30 pm & 6.30 pm - 8.30 pm  
Wednesday 7 December, 6.30 pm - 8.30 pm

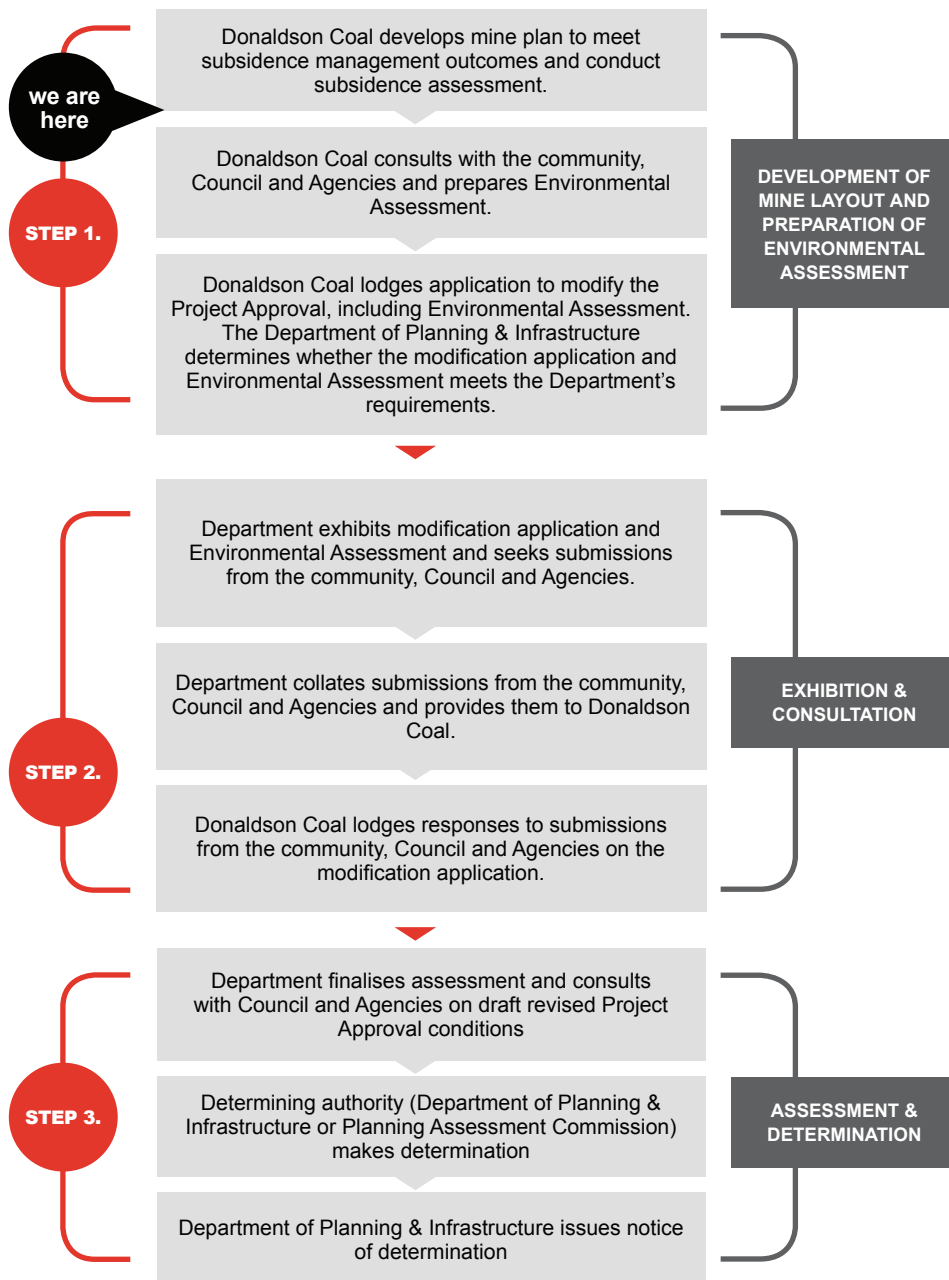
Sandwiches and refreshments will be provided at the information sessions.

For further information, please contact Phil Brown or Adam Heeney (contact details over page).



# Project Approval Modification Typical Steps

Under section 75W of the *Environmental Planning and Assessment Act, 1979*



## COMMUNITY CONSULTATION

Ongoing community consultation will be conducted with landowners and the broader community as part of the environmental assessment process. The Abel Underground Mine Community Consultative Committee (CCC) will also be kept informed with the status of the modification.

The Environmental Assessment of the proposed modification will be made available for public review and comment in 2012.

Donaldson Coal will continue to consult with the community, landholders and regulatory agencies during implementation of the modified mine plan.

## ABEL UNDERGROUND MINE ENVIRONMENTAL AND COMMUNITY ENQUIRIES

### Environmental Enquiries:

Phil Brown  
Environmental Manager  
Phone: 1800 111 271

### Community Enquiries:

Adam Heeney  
Community Liaison Officer  
Phone: 0400 446 700

For more information on Donaldson Coal, please visit:  
[www.gloucestercoal.com.au](http://www.gloucestercoal.com.au)







# DONALDSON COAL

Part of the Yancoal Australia Group

## ABEL UNDERGROUND MINE

MODIFICATION APPLICATION | COMMUNITY INFORMATION

FEB  
2013

### About Donaldson Coal

Donaldson Coal owns the Abel Underground Mine, Tasman Underground Mine and Donaldson Mine in the Newcastle Coalfield. Donaldson Coal is a wholly owned subsidiary of Yancoal Australia Limited.

Donaldson Coal has been operating for more than 10 years with a strong environmental management record.

Donaldson Coal's operations have created more than 350 local jobs, and indirectly hundreds of other jobs are supported through the use of local contractors and service providers.

Donaldson Coal actively supports local communities. Since 2001 the Donaldson Job Creation Trust has allocated \$1 million to job training and education. As part of Donaldson Coal's commitments for the Abel Underground Mine, the Donaldson Community Welfare Trust is providing \$250,000 over five years to education and community needs such as the "News in Education" program and the Donaldson Conservation Trust has allocated \$1 million for local conservation projects over 10 years.

### Abel Underground Mine

The Abel Underground Mine is an underground coal mining operation south of John Renshaw Drive approximately 23km north west of the Port of Newcastle, in the Newcastle Coalfield.

The Abel Underground Mine was approved in June 2007 and underground mining began in early 2008.

The Abel Underground Mine is approved to produce approximately 4.5 million tonnes of run-of-mine (ROM) coal per year using bord and pillar mining methods with a combination of total and partial pillar extraction in the Upper and Lower Donaldson seams.

### Overview of the Abel Modification

Donaldson Coal wishes to introduce shortwall mining (120m wide compared to currently approved 165m wide bord and pillar panels) and longwall mining (230m wide) in some areas to increase the efficiency of the Abel Underground Mine operations (refer to figure). Consistent with Donaldson Coal's previous commitment, no shortwall or longwall mining would occur beneath privately-owned residences without the prior agreement of the landowner.

The modification to the Abel Underground Mine would involve mining only within the existing approved area and coal seams and the modified mine layout would be developed to meet existing approved subsidence management commitments (e.g. commitments for residences, third order streams and alluvium associated with Blue Gum Creek).

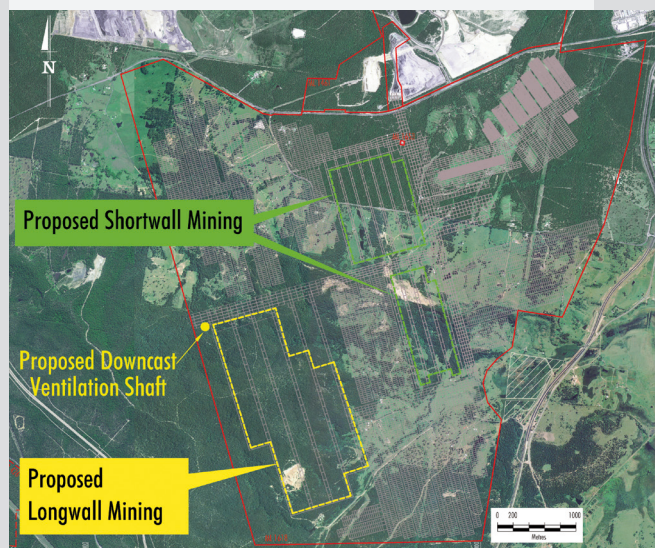
As required under NSW legislation, Donaldson Coal has sought a modification to the existing Abel Underground Mine Project Approval under section 75W of the Environmental Planning and Assessment Act, 1979. The flowchart over the page provides a summary of the approval process.

### Community Information Sessions

Donaldson Coal will be holding another round of Community Information Sessions at the Black Hill Public School to discuss the modification to the Abel Underground Mine. All members of the local community with an interest in the modification are welcome to attend.

The information sessions afford an opportunity to learn about the results of the specialist studies for the Environmental Assessment and how Donaldson Coal will be meeting existing approved subsidence management commitments.

Donaldson Coal representatives involved in the preparation of the Environmental Assessment will be available for one-on-one discussions.



### Key Information

Location: **Black Hill Public School,  
408 Black Hill Road, Black Hill**

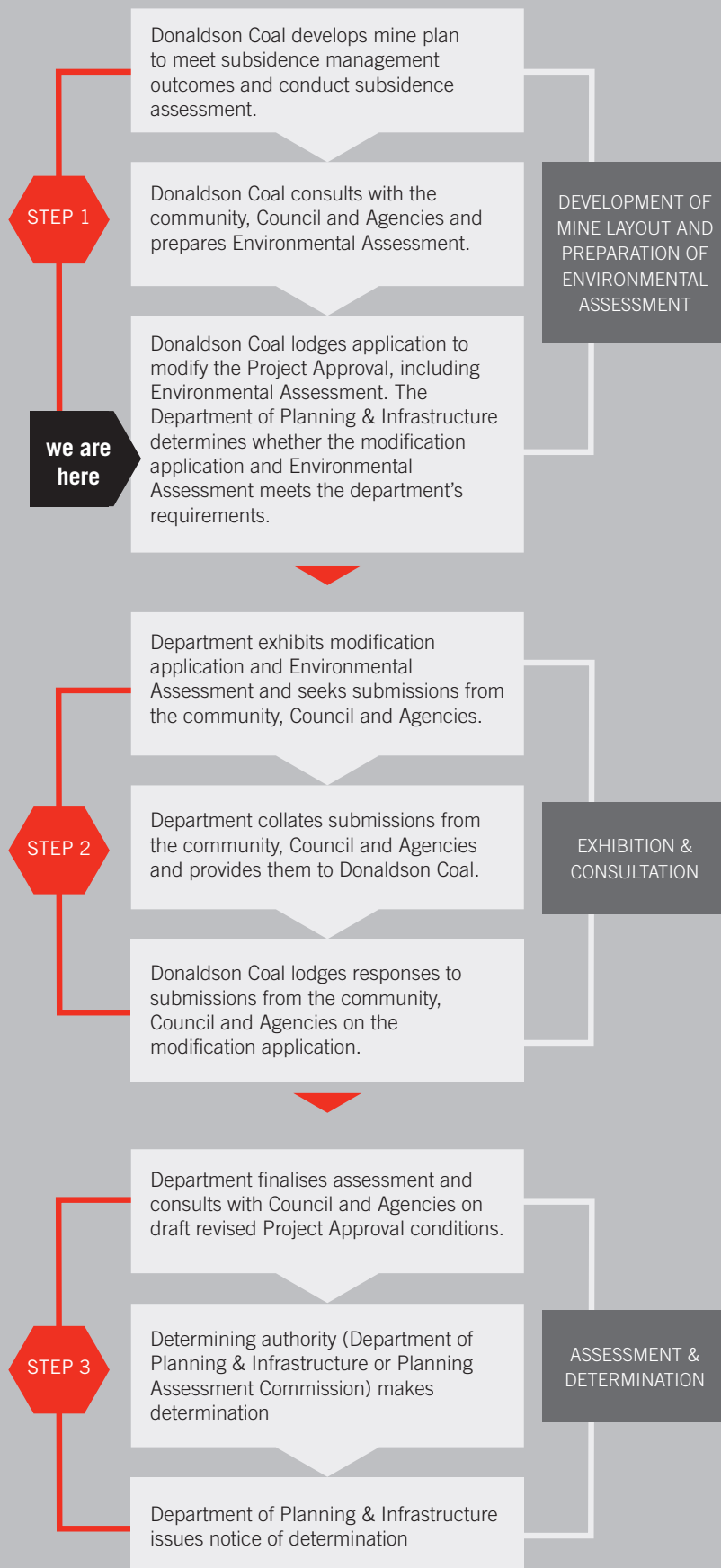
**Tuesday 26 February**  
2.00pm – 5.00pm

**Wednesday 27 February**  
2.00pm – 8.00pm

Refreshments will be provided at the information sessions. For further information, please contact Phil Brown or Adam Heeney (contact details over page).

# Project Approval Modification Typical Steps

Under section 75W of the *Environmental Planning and Assessment Act, 1979*



## Proposed Upgrades to the Bloomfield Facilities

Coal mined at the Abel underground mine is processed at the Bloomfield Coal Handling and Preparation Plant (CHPP).

The modification will increase the rate of coal mined at the Abel Underground Mine. Upgrades to the existing Bloomfield CHPP may be required to enable a higher rate of coal processing.

All upgrades to the Bloomfield CHPP would occur within the existing disturbance area. Any construction works would be conducted on weekdays during daytime hours (7.00am to 6.00pm), and 8.00am to 1.00pm on Saturdays.



## Status of Environmental Assessment

The environmental studies for the modification to the Abel Underground Mine have been completed and an Environmental Assessment has been lodged with the Department of Planning and Infrastructure.

The Environmental Assessment includes assessment of potential impacts and proposed management measures for a range of environmental and social issues including: subsidence; water resources; ecology; and amenity (air quality and noise).

Following review by the Department of Planning and Infrastructure, the Environmental Assessment will be placed on public exhibition. The Department of Planning and Infrastructure will advertise the timing of the public exhibition and viewing locations. During this time, members of the public will be able to provide submissions on the Environmental Assessment.

## Abel Underground Mine Environmental and Community Enquiries

### Environmental Enquiries:

**Phil Brown**

Environment & Community Relations Manager

Phone: 1800 111 271

### Community Enquiries:

**Adam Heeney**

Community Liaison Officer

Phone: 0400 446 700

For more information on Donaldson Coal, please visit

[www.doncoal.com.au](http://www.doncoal.com.au)

**DONALDSON COAL**  
Part of the Yancoal Australia Group

